



Goodbye from the 2011 ESSA Summer School



Centre for Research in **Social Simulation**



The European Social Simulation Association

you are here: home

upcoming events

Call for Papers: ESSA 2011
Agropolis International, Montpellier, France, Sep 19, 2011

[Previous events...](#)

[Upcoming events...](#)

« July 2011 »

Mo	Tu	We	Th	Fr	Sa	Su
				1	2	3
4	5	6	7	8	9	10
11	12	13	14	15	16	17
18	19	20	21	22	23	24
25	26	27	28	29	30	31

Welcome to ESSA

The European Social Simulation Association was formed in 2003 in order to promote the development of social simulation research, education and application in Europe. ESSA works closely with its American equivalent, [NAACSOS](#) and the Pacific Asian Association for Agent-based Approach in Economic & Social Complex Systems, [PAAA](#).

The objectives of ESSA are to:

- Encourage the development of social simulation in Europe and more widely.
- Promote international cooperation among those working in the field while recognizing the distinctiveness of European social simulation research
- Promote and support the development of European post-graduate courses and qualifications in social simulation
- To liaise with other groups to reduce unnecessary clashes in the scheduling of conferences, meetings and workshops relating to social simulation
- Support and organize regular regional and international conferences

ESSA was founded on the basis of a manifesto signed by many social simulation researchers. These founding members also drafted a constitution which forms the basis of [ESSA's constitution](#).

Interested? Then register your interest now!

To register your interest to join ESSA use [this online form](#) (the registration form for new members can be reached via the [register](#) button on top right-hand side of the start page!). Once registered you will be sent an e-mail with your login name and password, and from then on you will be able to use this portal and all information therein. Note that the annual fees are 50 € (students, including postgraduate, but not including postdoctoral students, pay only 30 €). These fees are mainly used for

log in

Login Name

Password

[log in](#)

[Forgot your password?](#)

linkedin

FollowUs



Some useful web links

<http://www.jiscmail.ac.uk/simsoc>

JISCMAIL@AC.UK

List Management ▾ Subscriber's Corner Email Lists JISCmail Tools ▾

SIMSOC Home Page

SIMSOC@JISCMail.AC.UK

Options

[Subscribe or Unsubscribe](#) [Post New Message](#) [Newsletter Templates](#) [Log Out](#) [Change Password](#)

JISC Advance Services

- [JISC Digitalmedia](#)
- [JISC Infonet](#)
- [JISC Legal](#)
- [JISC Netskills](#)
- [JISC Procureweb](#)
- [JISC Techdis](#)

Other Services

- [Depot](#)
- [Jorum](#)

Latest Messages

Call For Chapter Proposals: Innovation	Farley Nobre <f.nobre@YAHOO.COM>	Sun, 16 May 2010 17:29:15 -0700
Call for papers : MULTICONF-10, USA, July 2010	John Edward <jeedward@YAHOO.COM>	Sun, 16 May 2010 10:18:29 -0700
10th June: Workshop on Rich Cognitive Models	Nigel Gilbert <N.Gilbert@SURREY.AC.UK>	Fri, 14 May 2010 15:44:49 +0100

SIMSOC

News and discussion about computer simulation in the social sciences [Hide Latest Messages](#)

This list is for announcements, news and discussion related to the use of computer simulation in the social sciences, including approaches based on micro-simulation and multi-agent modelling.

- [May 2010](#)
- [April 2010](#)
- [March 2010](#)
- [February 2010](#)
- [January 2010](#)



Centre for Research in **Social Simulation**



<http://jasss.soc.surrey.ac.uk>



JASSS

*The Journal of Artificial
Societies and Social Simulation*

an inter-disciplinary journal for the exploration and understanding
of social processes by means of computer simulation

ISSN 1460-7425



Advanced Search

Published quarterly at the end of January, March, June and October

Edited by Nigel Gilbert Review editor Flaminio Squazzoni Forum editor Klaus G. Troitzsch

Peer reviewed articles

A Computational Model of Worker Protest

Jae-Woo Kim and Robert Hanneman

Leadership, Violence, and Warfare in Small Societies

Stephen Younger

Multiagent System Applied to the Modeling and Simulation of Pedestrian Traffic in Counterflow

Ana Luisa Ballinas-Hernández, Angélica Muñoz-Meléndez and Alejandro Rangel-Huerta

Scale-Free Relationships Facilitate Cooperation in Spatial Games with Sequential Strategy

Tetsushi Ohdaira and Takao Terano

An Agent-Based Model of Sustainable Corporate Social Responsibility Activities

Isamu Okada

Reallocation Problems in Agent Societies: A Local Mechanism to Maximize Social

[About JASSS](#)

[Previous issues](#)

[Most viewed](#)

[Cited articles](#)

[Reader map](#)

[Statistics](#)

[Editorial Board](#)

[Referees](#)

[How to submit](#)

[Contact us](#)

Volume 14

Issue 3

June 2011

Subscribe:

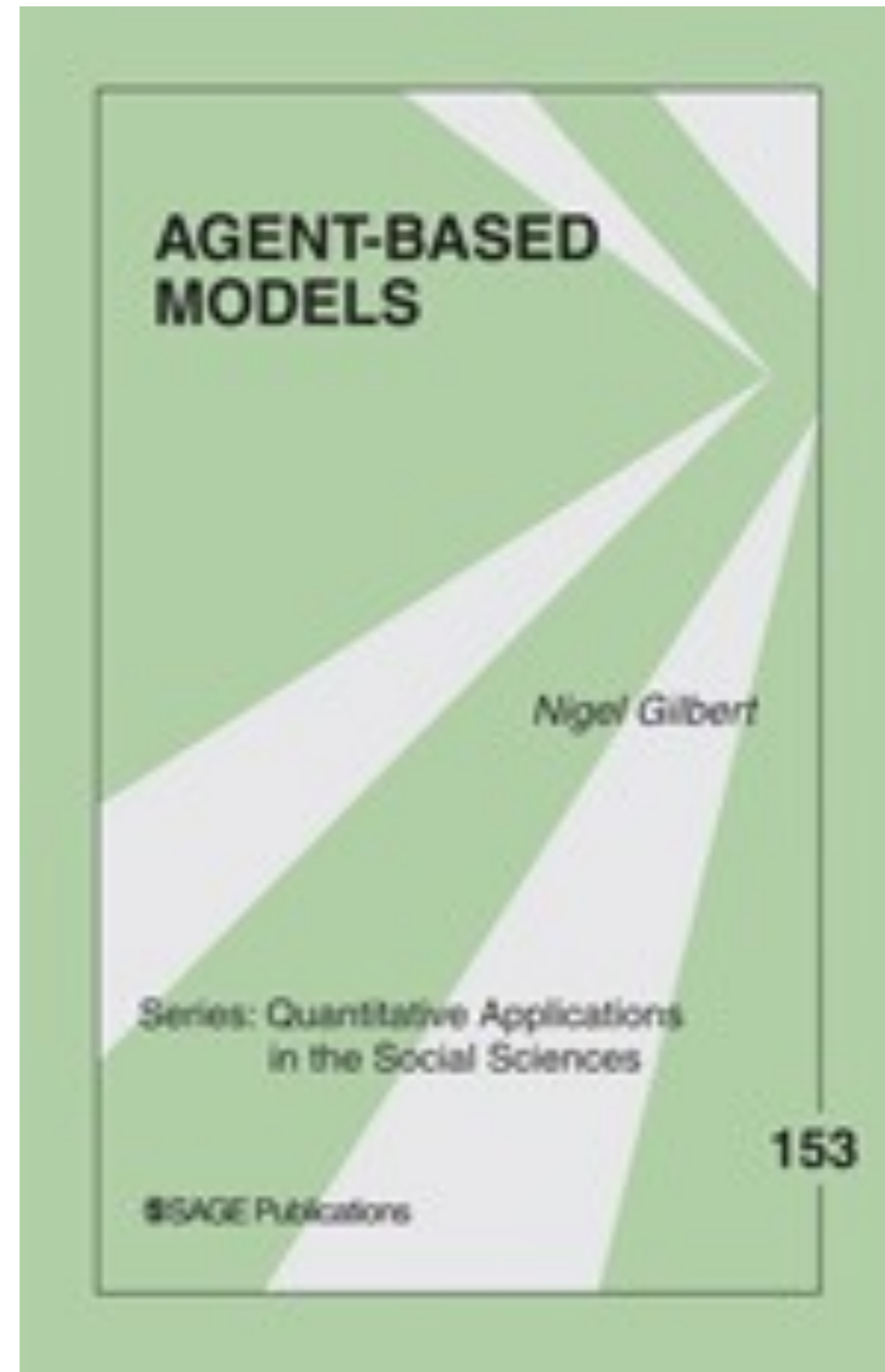
to be notified of new
issues

[\(Unsubscribe\)](#)



© Copyright JASSS

Last modified: 30-Jun-2011



 **Nigel Gilbert**
[Edit My Profile](#)


- News Feed
- Messages
- Events
- Friends


ESSASummerSchool...

- Friends UK
- Create group
- See all

- BranchOut
- Visual Bookshelf
- More

Friends on Chat




 **ESSASummerSchool2011**
 Closed group

[Edit settings](#) Search this group

Share: Post Link Photo Video Question

Write something...

 **Lu Yang**
 Staying over the weekend? You can view the Duchess of Cambridge's dress in Buckingham Palace.



Kate's wedding dress on display
www.bbc.co.uk
 The Duchess of Cambridge's wedding dress, designed by Sarah Burton for Alexander McQueen, is to go on display at Buckingham Palace on Saturday.

about an hour ago · Like · Comment · Subscribe

 **Nigel Gilbert**
 Summer school dinner



11 hours ago via iPhone · Like · Comment · Unsubscribe

Lu Yang and Flaminio Squazzoni like this.

Write a comment...

 **Flaminio Squazzoni**
 Greetings from Italy, guys!
 12 hours ago · Unlike · Comment · Subscribe

You, Lu Yang, Lynne Hamill and Ira Vengrina like this.

Write a comment...

Members (25) See all

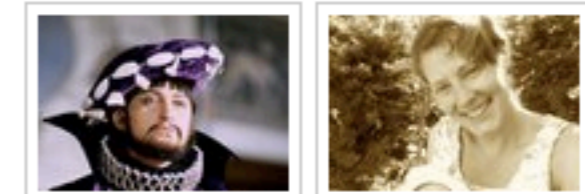


Add friends to group

- Chat with group
- Create doc
- Create event

- View photos
- Edit Group
- Leave Group

Friends' photo albums Show more



Profile pictures by Corinna Drury

Sponsored Create an advert

See your public record search.mylife.com



Enter your name to see publicly available information about you. CLICK HERE to get started.

Equity Release Calculator

- Please fill in and return the evaluation forms
 - ✦ we'll use your comments when planning the third Summer School
- A few Certificates remain to be collected
- Remember to return your room key



- Thank you to our lecturers
- Thank you to our tutors
- Thank you to you for all your contributions





Have a safe trip

