



GIG
CYMRU
NHS
WALES

Iechyd Cyhoeddus
Cymru
Public Health
Wales

Finding both the needle and the
haystack!

Tuberculosis case finding in Wales.

Dr Mark Temple, CPHM, CDSC(Wales)

24/03/2011

Why TB?

- TB is different from other infectious diseases.
 - Slow growing bacteria
 - Few develop primary disease
 - Most develop post primary disease
 - Classic Phytis
 - Incubation period can be over 50 years
 - Can imitate any other disease

What's happening in Wales

- 150 years ago
 - Incidence 1000/100,000
- 2007
 - Incidence <5/100,000
- But local outbreaks occur
 - NOT imported disease

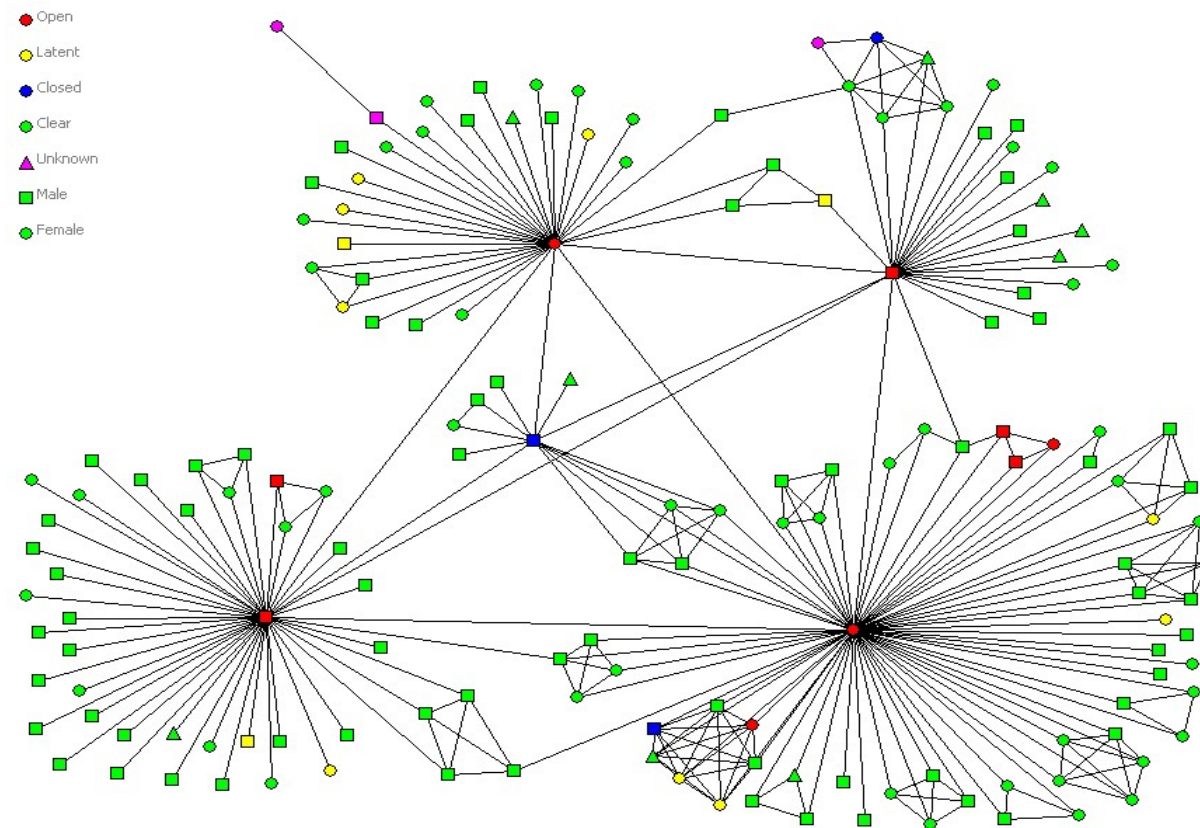
My involvement

- 1997 outbreak in one valley town
 - Young adults & adolescents
- 2000 child dies of TB meningitis
- Further cases come to light
- 2008 more cases diagnosed
- 2010 we start population screening

Meanwhile

- Outskirts of city
- Pub Outbreak
 - Involving young adults
- Primary school Outbreak
 - Same strain of TB
- 2009 city centre case links to Pub
 - But different strain

Network 1

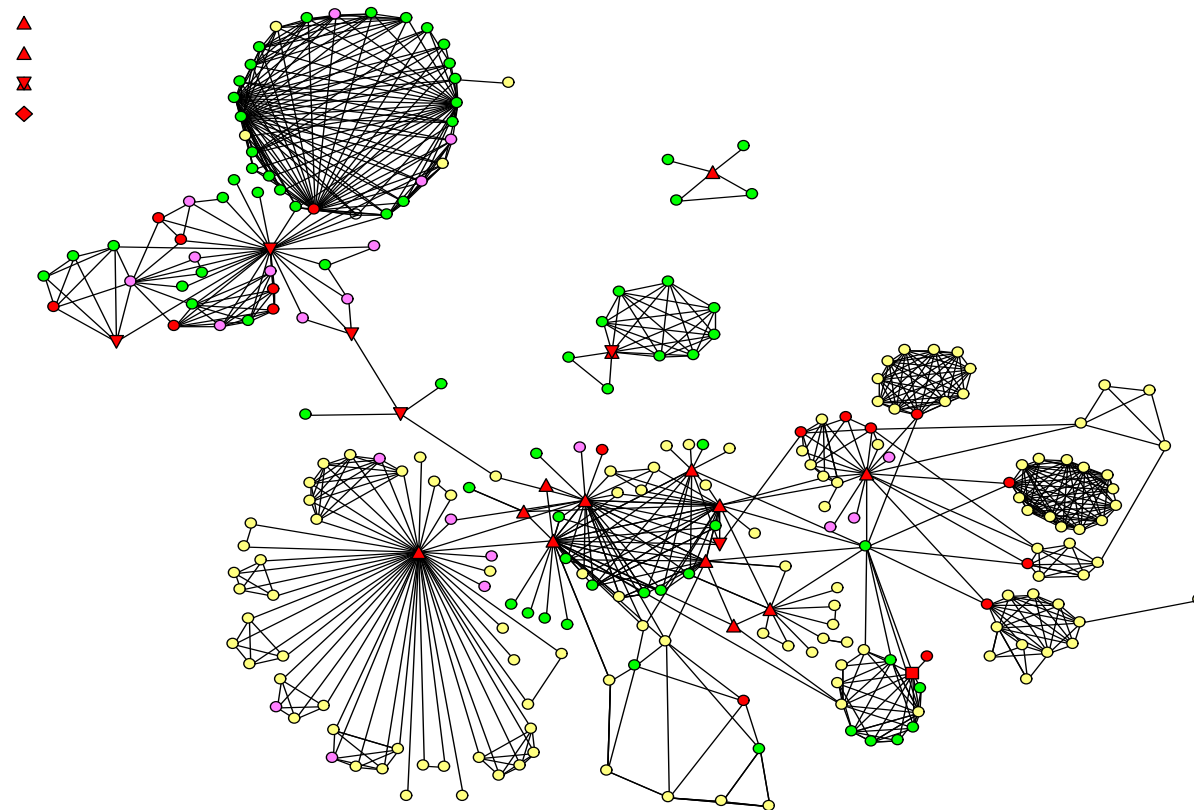


Tuberculosis case finding in Wales



lechyd Cyhoeddus
Cymru
Public Health
Wales

Network 2



Tuberculosis case finding in Wales



GIG
CYMRU
NHS
WALES

Iechyd Cyhoeddus
Cymru
Public Health
Wales

In the past year

- A pub based outbreak with three children infected
- A family outbreak with school involvement



The Model (a)

- Agent based approach
 - Individual spread important
 - Large chance element
- Homogenous agents to represent young adults
 - One case at random to act as seed
 - Case finding process is instant
 - When first case diagnosed

The Model (b)

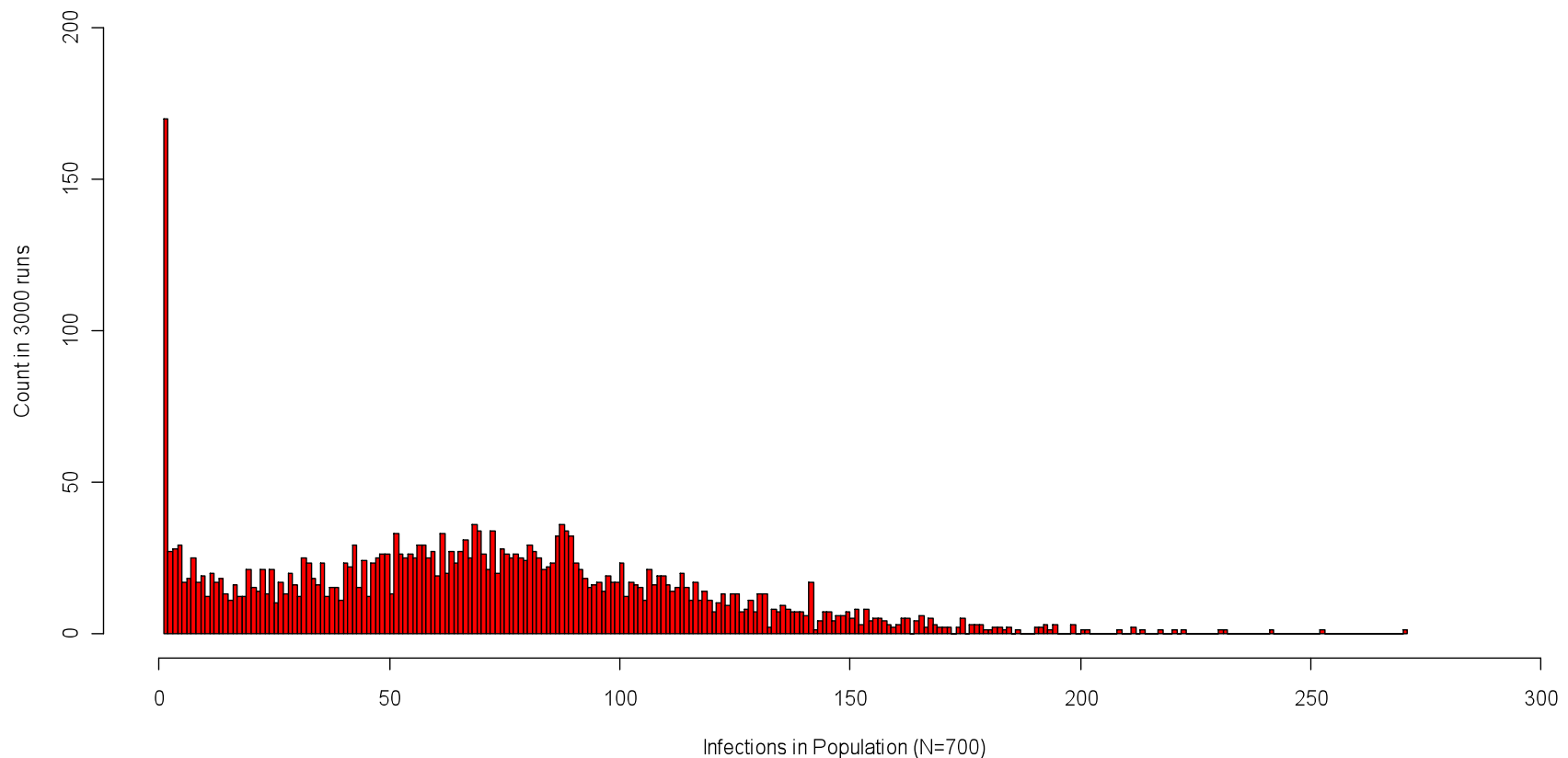
- Agents mix using “Communities model” (Gilbert 2009)
- All “contacts” Clinically relevant
- No births or deaths
- Agents asked about contacts once

Variables

- Contact tracing type
 - Standard or enhanced
- Case finding compliance
- Time dependent contact memory
- Memory of contacts' contacts
 - dependent on meeting frequency

Model's outbreak sizes

Distribution of Outbreaks



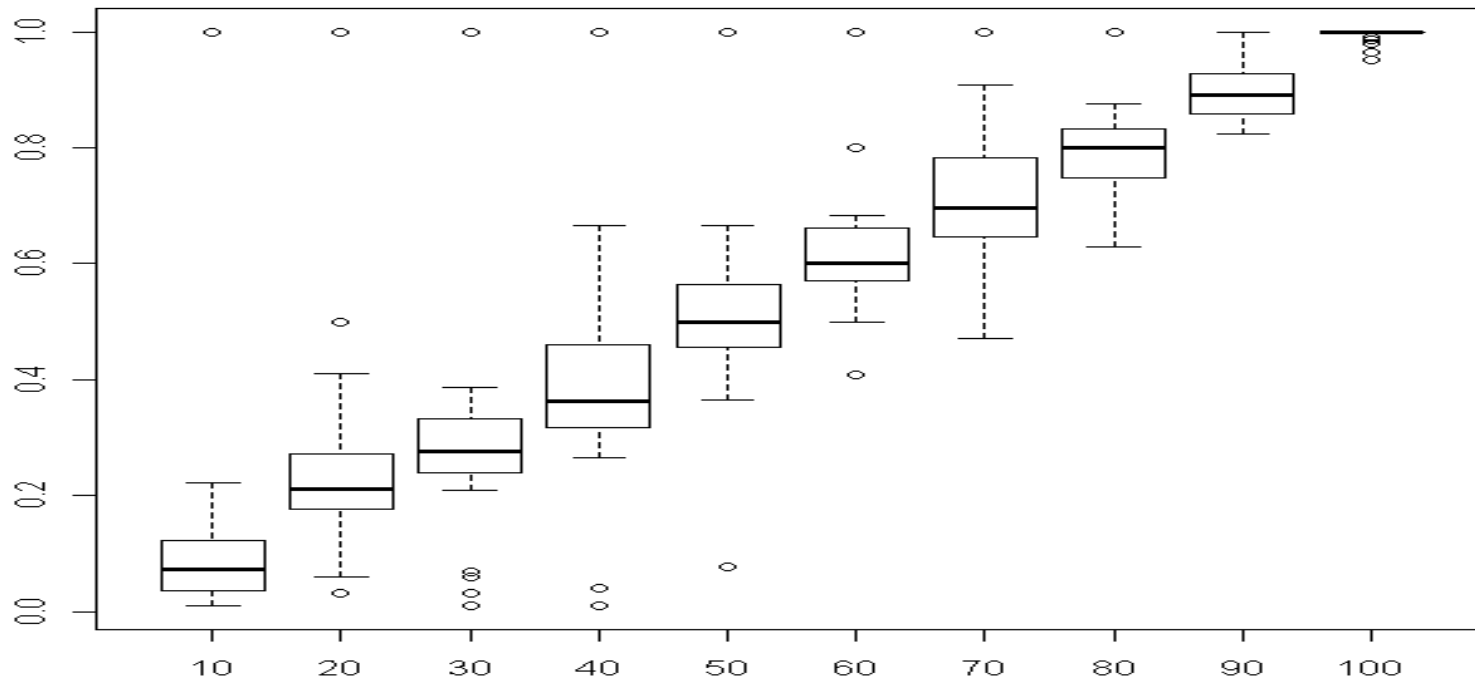
Tuberculosis case finding in Wales



GIG
CYMRU
NHS
WALES

Iechyd Cyhoeddus
Cymru
Public Health
Wales

Compliance is crucial to case finding



Tuberculosis case finding in Wales

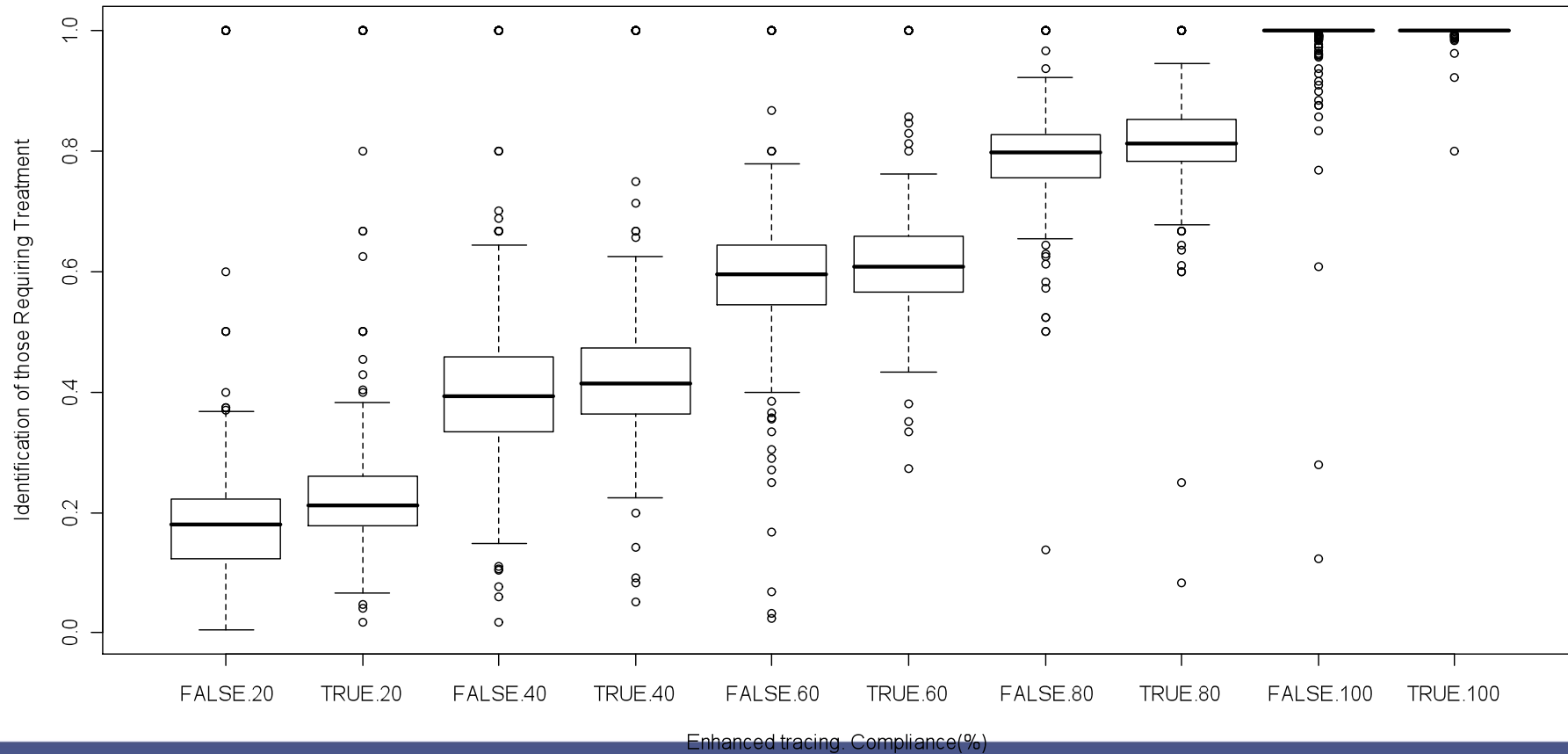


GIG
CYMRU
NHS
WALES

Iechyd Cyhoeddus
Cymru
Public Health
Wales

Enhanced method improves case finding

Effect of Enhanced case finding and Compliance on Identification of Patients

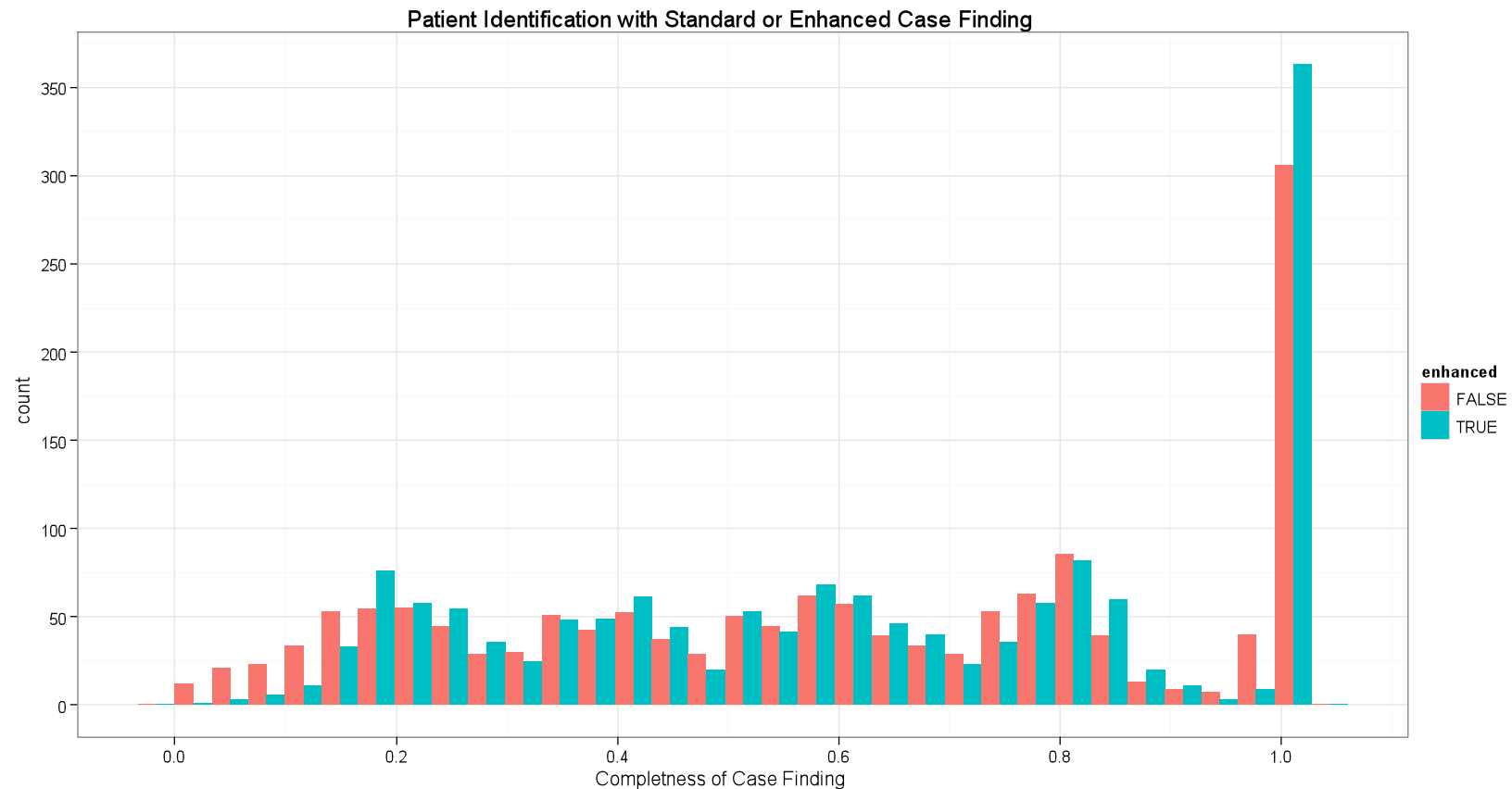


Tuberculosis case finding in Wales



lechyd Cyhoeddus
Cymru
Public Health
Wales

Particularly at the extremes



Tuberculosis case finding in Wales



GIG
CYMRU
NHS
WALES

Iechyd Cyhoeddus
Cymru
Public Health
Wales

What about some Stats

Case finding Completeness	Standard	Enhanced
Mean	0.60	0.63
Median	0.61	0.63

- Wilcoxon rank test
p=0.0067 for two sided test
3000 runs (1500 of each)

Weakness

- Model assumes people know about contacts' contacts directly
 - No evidence in medical literature
- Compliance universal using behaviour space tool
 - Will try individual random compliance
- Population “tightness” needs exploring

Strengths

- Outbreak sizes reflect reality
- Compliance effect reflects reality
- Outcomes truly unpredictable
 - Felt real
- Suggest modest improvement
 - by minor change in practice.

In practice

- Are asking for contact's contacts
 - Unwillingness to tell us directly
- Model appears to overestimate recall
 - We are still finding cases by indirect routes

Conclusion

- Asking about contacts' contacts is being used in practice
 - Legal position remains unclear
- Work continues but slowly
 - Ensuring staff available to improve TB Control in Wales is current priority
- Still need to write the papers!